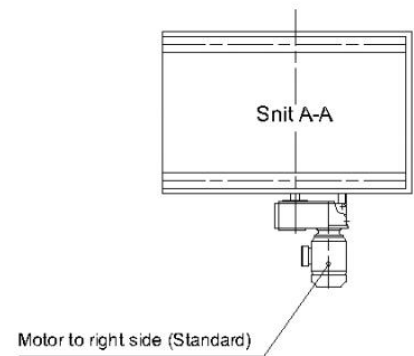
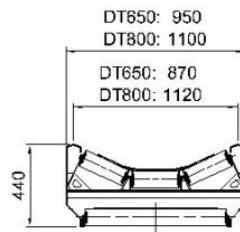
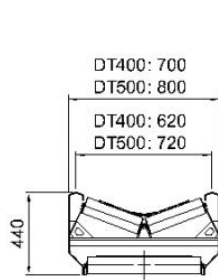
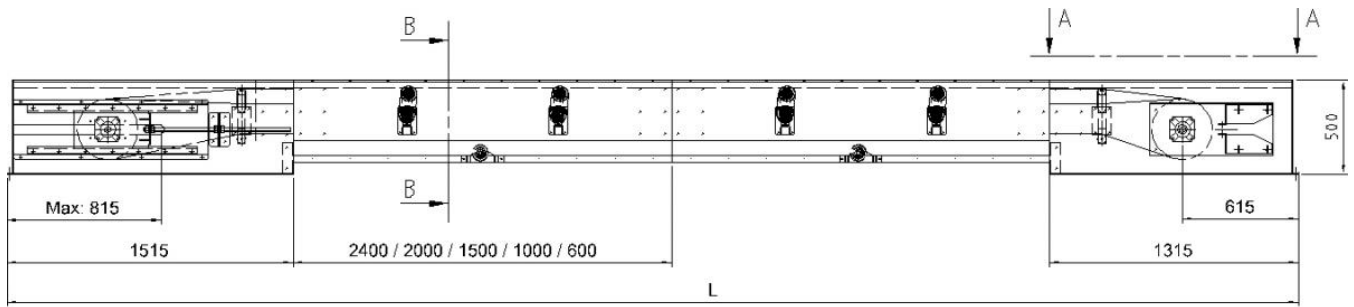


Sketch type DT



Specifications		DT400	DT500	DT650	DT800
Capacity*	t/h	49	95	200	315
Capacity*	m ³ /h	65	125	260	415
Motor	kW	1.1 - 2.2	1.1 - 4.0	2.2 - 7.5	3.0 - 11.0
Weight per metre, incl. belt	kg	44	48	55	63
Weight, driving and tension section, excl. motor	kg	130	140	155	170
Weight, throw-off carriage, incl. two-way distributor	kg	340	350	365	380
Distance between supports	m	7.5	7.5	5.0	5.0

* Capacities are based on a nominal speed of 2.0 m/s and a specific gravity of 0.75 t/m³.

Weight of geared motor

1.1 kW: 37 kg
 1.5 kW: 39 kg
 2.2 kW: 43 kg
 3.0 kW: 76 kg

4.0 kW: 84 kg
 5.5 kW: 84 kg
 7.5 kW: 95 kg
 9.2 kW: 102 kg

